

Kōrero



News and stories from Pukerua Bay

Vol 1, Issue 1
February 2021



***Wairaka Rock, Pukerua Bay.** When Wairaka eloped with her lover, Weku, her husband, the explorer Haunui-a-Nanaia, pursued them from Mahia Peninsula, naming places along the way. Haunui caught them at Pukerua Bay, where he turned Wairaka into stone.*

Kia ora

Mihi ki te hapori o Pukerua... warm greetings to all residents of our beautiful community. We welcome you to this first issue of our new community newsletter.

Most of you know that the school published a community newsletter for many years, supported by a team of local volunteers. The school has now stepped back from this task, and a group of residents have picked it up. We hope the newsletter, which we've named *Kōrero*, will continue to keep us connected and informed.

We want *Kōrero* to be a place of celebration, where we can share the good things that are happening in our place and the things that give us resilience to get through tough times. For that reason, the theme of this issue is, "2020 was tough – how can we work together to make 2021 amazing?" On pages 3-11, you'll find some examples of groups and organisations that you might like to be involved with. Feel welcome to tell us about local groups you belong to or events that you're organising, so we can include them in later issues.

We want to help get conversations going about what matters to people in the Bay, and what we can do to make this place even better. So, the next issue will tell you about the new Village Plan survey that the Residents' Association will launch in a few months. But right now, we're reflecting back on lessons

learned from our experience of the 2020 lockdown. You'll find an invitation to take part in a survey on this on pages 12-13.

We plan to publish five issues in this first year. It can't, and won't, cover all the amazing people, stories, and opportunities in our community. Our plan is to simultaneously redevelop the Pukerua Bay community website to add more information:

www.pukeruabay.org.nz

We're working with the support of the Residents' Association and the good people whose advertisements you see in this issue. Special thanks to Kylie Lyne for her sponsorship of this issue. Without her support and that of our other advertisers, this project would just be an idea! If you'd like to purchase advertising in our next issue, please get in touch.

For information about how you can contribute, either through suggestions about content, advertising, or sponsorship, please go to page 14. You'll find our contact details there.

Waiho i te toipoto, kaua i te toiroa.

Let us keep close together, not wide apart.

We acknowledge mana whenua of Pukerua Bay, Ngāti Toa Rangatira. For Ngāti Toa news, see www.ngatitoa.iwi.nz

Some of what makes Pukerua Bay great!

Pukerua Bay Residents' Association

The Pukerua Bay Residents' Association counts as its members anyone who lives in Pukerua Bay or who owns property here. The Association works to benefit the community through contact with Porirua City Council, Greater Wellington Regional Council, and organisations that affect the community.

Day-to-day running of the Association is through an Executive Committee elected at the AGM held in October. The Committee meets on the second Tuesday of each month, except for January.

Residents of the Bay are welcome to come along to the meetings, which are held at the RSA on Wairaka Road.

The Association has been heavily involved in establishing projects such as the He Ara Pukerua history project and the Community Garden Food Forest in Muri Reserve. It also advocates on the community's behalf. Its work is guided by a Village Plan developed by residents.

For more details, contact Moira Lawler: secretary@pukeruabay.org.nz

reds

Now open six days

Book online www.redshair.co.nz

8 Teihana Rd, Pukerua Bay | 04 2399479 |

redshair@xtra.co.nz

Pukerua Bay Kindergarten and He Ara Tika

Pukerua Bay Kindergarten and He Ara Tika (the pathway) are the hub for our youngest residents.

Our focus for 2020 was 'place-based learning', which means teaching about the unique community in which we live. We have built relationships with well-known locals that have helped us gain a deeper understanding of the history of our tangata whenua and European settlers. We have been able to share these stories with the tamariki through song and visual aids made by the teachers.

Our annual craft fair was a huge success, raising \$6100 towards the rebuild of our outdoor playground. The fair was well

supported by locals and was a fabulous night of music, food, and shopping.

At Christmas on the Field, the children made their teachers and parents proud by performing a number of songs on stage, including using sign language while singing, *"We wish you a merry Christmas"*.

We look forward to meeting new families in 2021 and enjoying another exciting year of teaching our young members of the Pukerua Bay community.

For more details, phone us on 239 9442 or go to our Facebook page: fb.com/PukeruaBayKindergarten



Pukerua Bay Playgroup

Pukerua Bay Playgroup runs on Mondays 9.30–11.30am during termtime (and sometimes holidays, too), at the Tennis Club on Rawhiti Road. The playgroup has been run on a voluntary basis by Pukerua Bay parents for many years and has built up a collection of different toys and activities.



We'd love to have some new families join us. There are a mix of babies, toddlers, and preschoolers each week, depending on who can make it. Bring a piece of fruit for a shared morning tea and we will supply the coffee and cheese puffs! Any questions, please come along or email Ella at: pukeruabayplaygroup@gmail.com

Community Garden and Food Forest



The thermette usually comes out for a cuppa at the end of every working bee at the food forest.

The Pukerua Bay Community Garden and Food Forest is really starting to take shape now, and is in its third year of growth. There is a keen group of people who meet regularly to tend the plants, clear weeds, and develop new areas.

The garden is still being developed, but it's intended to be a permanent,

ecologically sustainable system that is aligned with permaculture ethics and principles, and organic practices.

Everyone is welcome to become involved. A garden group meets there on the final Wednesday of every month from 10am–12pm, and there are regular working bees, normally on Wednesdays or Saturdays.

The garden is in Muri Reserve, off the old Muri station platform. You're welcome to pop in and pull some weeds out from around the trees. (Please leave the borage and comfrey.) There is a large pile of mulch you can add around the plants after weeding.

fb.com/PukeruaBayCommunityGarden

Pukerua Bay Soccer Club

As our soccer club enters its twenty-second year, we're all hoping that we won't suffer the disruption of last season: just as we were getting ready to start playing, Covid-19 hit and we were all in lockdown. However, the local kids (all 90-odd of them) eventually got to enjoy pretty much a full season of games.

We cater for children aged 4 to 15. Of course, a small village like Pukerua Bay can't always field a team in every age group (particularly once they go to college), but we generally can, and

children can normally play in the same team as their friends. As well as the typical competition games, we also have a Sunday morning programme for 4–6 year olds, which is a lot of fun.

It's not too late to register to play but get in quick, as we have to register our teams with Capital Football in March. Register at: www.pukeruabaysoccer.org.nz

For more details, email Iain MacLean at: pkb@pukeruabaysoccer.org.nz or phone on 027 420 3056.



Citizen scientists monitor beach litter

All around New Zealand's coasts, Sustainable Coastline volunteers are collecting, categorising, weighing, and counting litter. We have a group here in Pukerua Bay.

Once every three months, we survey a set area of the coast. We pick up rubbish, but the focus is not so much on a beach clean-up as on investigating what litter we have found. Once we've picked up all the rubbish, we categorise it, count it, and weigh it. We then input the data

into a nationwide database. The whole process takes two or three hours.

Here's data from our last survey: litterintelligence.org/data/survey?id=688

So far, the Pukerua Bay Litter Monitoring Group has a dozen volunteers. We'd welcome others who'd like to join us. Please email Gillian Candler at: gmcandler@gmail.com if you're interested.



98 Rawhiti Road, Pukerua Bay

Hours 8am-1pm
(Tuesday - Saturday)

Coffee, Homemade Baking
& Pies



Friday morning Yoga classes
in Pukerua Bay

45 min beginner class 9.10 - 9.55am
60 min gentle flow class 10.15 - 11.15am

For more information
please get in touch by email
tikoukayoga@usmann.ch
or call/text 022 392 0877

Waste Free PKB

Many household items can be recycled only if they are collected separately and in bulk, rather than being added to your normal household collection (i.e., your Council recycling bin). This includes batteries, toothbrushes, coffee capsules, bread tags, bottle caps, and lots more. With collection boxes on each side of the village, you can drop these items off to Waste Free PKB at any time, and rest easy in the knowledge that they will be turned into new, useful objects instead of sitting in landfill. For the full list, email Nikky Winchester at:

wastefreepkb@gmail.com or join our Facebook group: fb.com/groups/WasteFreePKB



Plans for 2021 include running one or more short workshops about waste free living during Plastic Free July. Get in touch if you'd like to be kept in the loop.

Friendly professional legal services for your house move

For more information please get in touch:

Jenina Snowling CONVEYANCER

TEL: 04 213 8205

MOB: 0204 0827731

FAX: 04 470 3225

jenina@rightmovelegal.co.nz

PO Box 57204, Mana, Porirua 5247

www.rightmovelegal.co.nz



NEW YEAR – NEW WEBSITE?

Setting up a website can be really exciting, but also quite daunting, with so many things to think about.

If you're starting the new year with a new website, or refreshing your old one, you're probably already scratching your head over your content.

Local Pukeruvians Angela Bensemann and Jane Comben have been there, done that, and know the pain of trying to make something interesting!

They've joined forces with web strategist Iona Elwood-Smith and written an easy-to-follow book of top tips for creating relevant content that appeals to your customers and will increase your sales.

The Perfect Recipe for Creating Awesome Web Content is aimed specifically at women business owners and provides a step-by-step approach to planning content, creating it, making it look awesome, ensuring the website is searchable and then how to promote it.

The book comes with a series of worksheets to help you actually write your own content so you'll be ready to go.

For more information and to buy your copy visit
www.collaborationstation.co.nz/the-book.



collaboration
STATION

Your local councillor

Josh Trlin, councillor for the Northern Ward / Pukerua ki te Raki



Kia ora! My name is Josh Trlin. I'm one of your local Northern Ward councillors and I want to hear from you.

- Have an idea to improve our city?
- Concerned about an issue within our community?
- Want to know more about the work your council is doing?
- Got a problem you need council help to solve?

Drop me a line and let's have a chat.



JoshTrlinPorirua
josh.trlin@labour.org.nz
027 374 0114

Have you heard of Porirua City Council's app, Antenno?

Download Antenno, a free mobile app that sends you notifications and alerts about places and topics you care about – recycling collection days, road closures, water outages, events, and more. You'll get alerts on your home screen, so it's an easy way to stay informed.

You can use the Antenno app to tell Council about something that needs fixing or report something directly to Council: www.porirua.govt.nz



School gala postponed

Unfortunately, a building upgrade means that this year's gala has been postponed. We look forward to bringing you the news when the new date has been determined.

He Ara Pukerua Historic Display and Community Garden Family Fun Day

Despite the gloomy grey weather, September's Pukerua Bay Family Fun Day went ahead as planned for the opening of the new *Rail Comes to Pukerua* and Rail Timeline display panels in the former Muri Station building, and the Community Garden Fun Day.

The He Ara Pukerua rail history displays were blessed by Ngāti Toa kaumatua Kahu Ropata, supported by Moana Parata and others. Porirua City Mayor Anita Baker and Ward Councillors Nathan Waddle and Josh Trlin revealed the panels. A section of the tramway rail used during the construction of the Wellington and Manawatu Railway 1884–1886 was presented to the mayor. Kahu also blessed the community garden.

Following the blessing and speeches there was a sausage sizzle, cakes and tea brewed from thermettes, and a stall selling T shirts and home-made face masks. A smaller turn-out than planned, but still attended by enthusiastic locals braving the wind and drizzle.

He Ara Pukerua is grateful for the help from Greater Wellington Regional Council and KiwiRail to secure the lease on the former Muri Station shelter. The northbound Muri Station shelter has been relocated onto the garden and is in the process of being refurbished.

To learn more about He Ara Pukerua and its activities, go to the He Ara Pukerua Facebook page at: fb.com/HeAraPukerua



Images courtesy of Cr. Josh Trlin, Porirua City Council (via Facebook); Andy Erceg and Ashley Blair, He Ara Pukerua (via Facebook).

What can we learn from the Covid-19 lockdown?

As a nation, we've responded incredibly well to the threat posed by Covid-19, and here in Pukerua Bay we seemed, for the most part, to stick together and care for each other. But it wasn't perfect, and we know we can do better.

The Pukerua Bay Hub and Residents' Association would like to know about how people were supported by the



community, as well as people you know who could have used support but didn't get it. What were

the good things that happened, what could we have done better, and how can we prepare for another situation where our community has to fend for itself, such as a second Level 4 lockdown or a natural disaster?



WREMO workshop

In breaking news, Whetū Bennet from WREMO has offered to run a **workshop on emergency preparedness**. It will be held at the School and Community Hall on March 20.

More details will be shared on the Pukerua Bay community website nearer the time.

Please consider answering some, or all, of the questions listed in the form on the opposite page. The Hub will be using the findings from this survey to plan its work with the community, and the Residents' Association will include them in the review of our Village Plan. The findings will also be shared with Porirua City Council and WREMO (Wellington Region Emergency Management), so they can learn, too, about what our needs are, and how they could help build our community's resilience.

How to answer the survey

You can answer the questions:

- online at: pkb.nz/s/qllxkrz or
- on your mobile phone by scanning the QR code opposite; or
- you can do it the old-fashioned way and drop off your answers to one of these addresses:
2 Pukerua Beach Road
16 Sea Vista Drive
87 Rāwhiti Road

Covid-19 lockdown survey questions

1. A team of people set up a system of neighbourhood helpers to try to make sure everybody in Pukerua Bay felt supported and that they could get help if they needed it. Did you know about this system?
2. Did you have experience of the neighbourhood support system, as a volunteer or as someone who accessed help? Could you please tell us about that?
3. We know that people were helping each other, outside of that system. Could you give us some examples of things you did to help your neighbours? Or things your neighbours did to help you?
4. Do you know of people who needed support, but missed out? Without naming them, what was their situation? Why did they miss out?
5. What are some of the good things that you recall happening in Pukerua Bay during lockdown? Which do you rate to be the best?
6. If we had a similar situation, what could we do that didn't happen during the lockdown?
7. What is something we should do as a community to prepare for another possible lockdown?
8. What sort of help do you think our community should have accessed from the Council or other organisations?
9. During the lockdown, a local newsletter was published, called the *Covid Courier*. It was first delivered in print and then only online. Do you remember it? Did you access it after getting the first version in print?
10. What could we learn from the *Covid Courier* to help us to develop *Kōrero* as a newsletter that will have something to interest everyone in Pukerua Bay?



Survey QR code

Aroha mai, aroha atu – caring for one another

Next issue

The focus for next issue will be on what you want Pukerua Bay to look like in years to come. Please email newsletter@pukeruabay.org.nz by 29 March if you would like to submit any of the following, in keeping with the theme:

- A black and white image for the front cover;
- Poems, short stories, or other short pieces of writing;
- Suggestions for articles; or
- A brief item about what a group you're involved in is doing to help shape Pukerua Bay's future.

Kōrero
News and stories from Pukerua Bay

Editorial team

Kōrero is brought to you by Kate Dreaver, Jonathan Harker, Iain MacLean, Moira Lawler, Nikky Winchester and Anne Johnston. We thank the Pukerua Bay Residents' Association for its support.

Kōrero will come out approximately every eight weeks. We need your support to keep it going. Please consider making a donation or placing paid advertising.

Advertising rates start at just \$50 for a local listing for five issues (see below); \$75 for a card-sized ad; \$150 for a half-page ad; \$200 for a full page ad; or sponsorship of an entire issue for \$250.

For more details email: newsletter@pukeruabay.org.nz The copy deadline for the next issue is 29 March.

Support our local businesses / list your business here!

Mark Minenkoff	Registered electrician	Ph 239 9168 / M 027 449 4651
<i>Your business here!</i>		

Events calendar

9 March	Residents' Association meeting, 7.30–9pm, RSA, Wairaka Rd
20 March	WREMO workshop on emergency preparedness – details coming
10 April	Soccer season commences
13 April	Residents' Association meeting, 7.30–9pm, RSA, Wairaka Rd

To list an event in the April/May issue, please email by 29 March:
newsletter@pukeruabay.org.nz

Pukerua Bay Community website

The Pukerua Bay community website pukeruabay.org.nz holds a plethora of useful information, including local community groups and activities. This is growing, with the intention of also creating a directory of local businesses, services, and venues for hire. If you would like to be included in the directory, or if you have suggestions for other content, please email: newsletter@pukeruabay.org.nz

You can download a PDF of this and past issues of *Kōrero* from the website at: pkb.nz/korero or via this QR code.



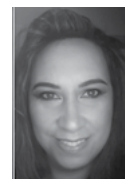
OUR SKINK: The image of the Whitaker's Skink on our banner, and in the Residents' Association logo, was created by local artist, Pauline Morse. Back in the 1980s, Pauline made T-shirts featuring the skink as a fundraiser for the kindergarten. Soon, everyone was wearing the skink design and it lives on in Pukerua Bay today. A unique creature, the skink reflects the uniqueness of our community. We thank Pauline for permission to use her image.



WELL HEY THERE LOVELIES !



It's Great To Be Here!



I am *Shanel* & the owner of *Le Mer - Beauty in the Bay* since June 2018 & I love it! This is me *Heeee!* I have enjoyed serving many locals throughout this time but I know there are still a lot out there that are yet to come in and meet me. Take a look through the window next time your passing, pop-in, say *Heeee!* check out this Months Special taped to the window and book in! Check out the offers below, they will last for February + March 2021

YOU CHOOSE:			
\$147 FULL BODY MASSAGE + FACIAL <small>Limit 1 coupon per customer. Not valid with any other promo. Valid for Feb/March 2021</small>	\$87 BACK EXFOLIATION + BACK MASSAGE <small>Limit 1 coupon per customer. Not valid with any other promo. Valid for Feb/March 2021</small>	\$97 BACK/NECK & SHOULDER MASSAGE + FACIAL <small>Limit 1 coupon per customer. Not valid with any other promo. Valid for Feb/March 2021</small>	FACIAL VOUCHER WITH ANY SKINCARE SET PURCHASED* <small>*cleanser serum eyecream moisturiser set Limit 1 coupon per customer. Not valid with any other promo. Valid for Feb/March 2021</small>

Have you ever wondered how to smooth out lines & wrinkles? Grab our **5 STEP GUIDE TO BUILDING BACK YOUR COLLAGEN** by dropping us an email: info@lemerdayspa.co.nz & we'll send it straight to your inbox.

1/8 Teihana Road, Pukerua Bay - inbetween REDS & the dairy | 04 2399968 | 027 5090550

YOUR
LOCAL
EXPERT,
**KYLIE
LYNE** SALESPERSON

Call me today for a free, no obligation
appraisal to see what amazing results I can
achieve for you!

021 022 79143 | 04 233 9198
kylie@clarkandco.nz

clarkandco.nz

ANDCO REALTY 1 LIMITED - LICENSED REAA 2008

PART OF THE ANDCO GROUP
ANDCO MEANS MORE